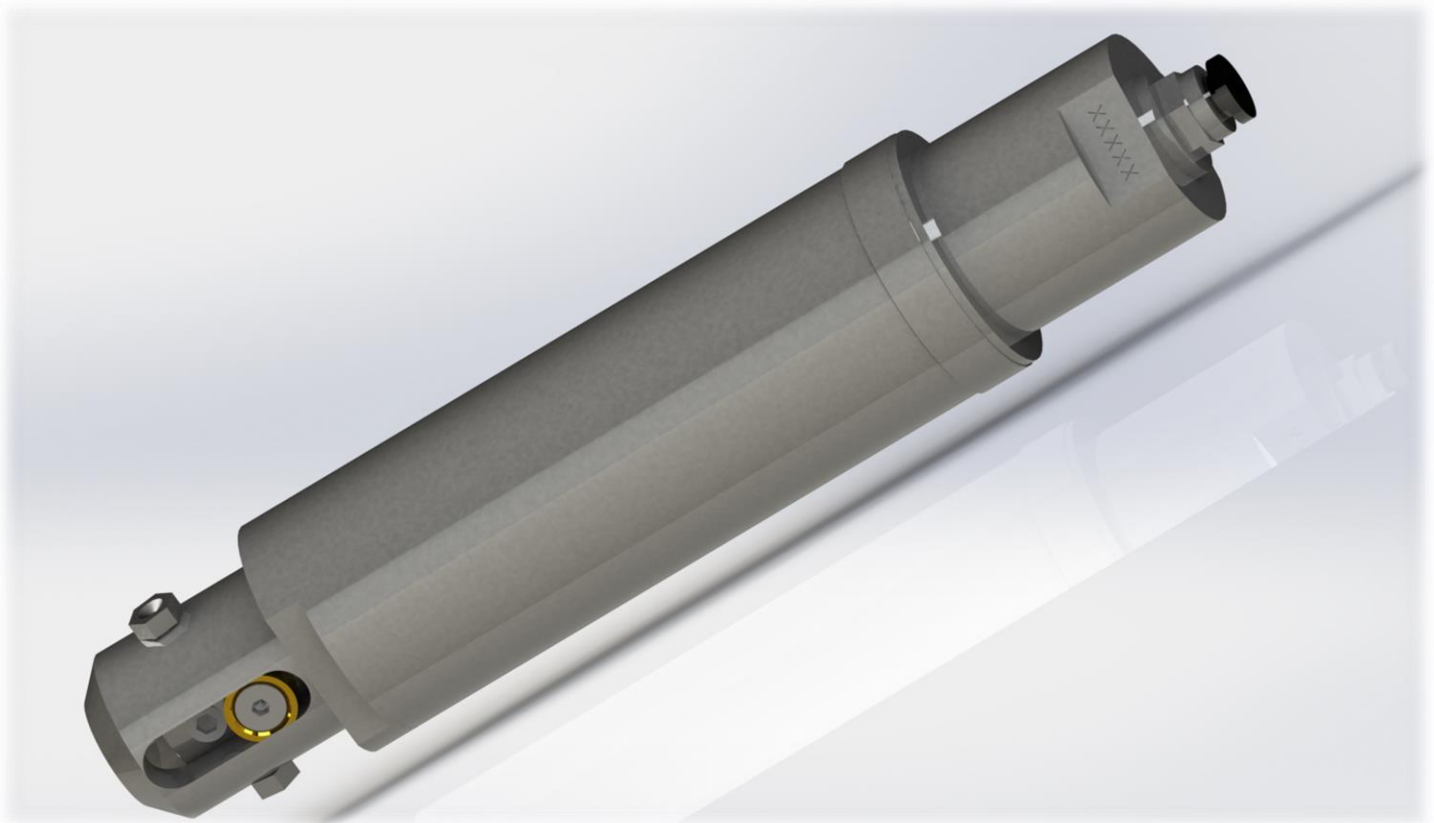


# Original-manual

## GSB OSZ 110

Version: 1.0



## Index of contents

Index of contents	.....	2
Used symbols in this manual	.....	2
Intended use	.....	3
Safety instructions	.....	3
Startup	.....	5
Tool changing	.....	5
Handling	.....	6
Working method	.....	6
Maintenance	.....	6
Repair	.....	7
Guarantee	.....	8
Disposal	.....	8
Arrangement plan	.....	9
Technical details	.....	10

## Used symbols in this manual



Potential Danger

This symbol is for all safety instructions where can happen danger to persons or property. Note these hints and behave especially carefully.



Ear protection

This symbol you will find in this manual where can occur danger caused by loud noises. Attention: Risk of hearing damage!



Hand protection

This symbol you will find in this manual where can occur danger caused by hand injury. For example, by changing the blade ware cut-resistant gloves.



Use breathing mask

This symbol you will find in this manual where can occur danger caused by particles in the air. Attention: Risk of lung damage!



High pressure

This symbol is for all safety instructions where can happen danger caused by overpressure. This danger can occur by working with pneumatical equipment.



Use Eye protection

This symbol you will find in this manual where it's necessary to wear eye protection. Attention: Risk of Eye injuries!



Attention

This symbol is located to work steps of particular note. You have to strictly follow guidelines, regulations, hints and the correct procedure of the work steps.

## Intended use

The GSB OSZ is only for use in a customer 4-axis-cutting-machine and to cut different types of material. For this the GSB OSZ is mounted to the customer's machine.

Only use the GSB OSZ in the sense of the intended use.

You have to follow all the technical specifications in the section "**technical data**" as well without exception. To use the GSB OSZ as intended you have to strictly follow this manual and the intended application conditions.



Potential Danger

### Observe Note!

You can't safely use the GSB OSZ if you use it not in accordance to the regulations. The user is responsible to all resulting Injures if the GSB OSZ is not used as intended. In this case the manufacturer is not responsible.

## Safety instructions



Potential Danger

Consider the following safety instructions as they can lower the risk of heavy injury's.

- The GSB OSZ may only put into operation by instructed staff
- To prevent injury's wear your personal protective equipment while operating with the GSB OSZ
- Any manipulation of our products as well as their packaging for example, change, reworking, restamping is inadmissible and will violate our rights. Those manipulations can impair the characteristics of our products as well as it can lead to consequential damages to the periphery. GSB is not responsible for damages caused by non-authorized manipulations.
- The warranty is not for wear parts as well as damage caused by intent or negligence. The warranty expires if the manual and the requirements in this manual will be ignored. Moreover, the warranty will expire if any seal will be damaged.
- When using the machine always wear hearing protectors.
- Work with the pneumatical equipment is only allowed to a trained specialist! There is an increased danger of pneumatically high-pressure.
- Only connect the machine to the compressed-air supply when the valve is switched off and the OSZ is installed.

- Never use the GSB OSZ if it has malfunction or it is damaged. In this case let the manufacturer check and repair it.
- Before operating with the GSB OSZ remove all Materials, tools and further equipment from the working area which are used to install the GSB OSZ to the customer machine.
- Disconnect the power of the GSB OSZ if you don't use the device or want to clean it. Let the GSB OSZ cool down before cleaning.
- Be sure that all connections are carefully assembled and firmly tightened.
- While working, watch out for the danger of certain materials generating dust or vapors which could create an explosive atmosphere
- Ensure that no manual intervention is possible to the GSB OSZ while machine is operating.
- Make worn-out devices immediately useless. Useless devices have to be disposed at intended disposal sites
- Store the manual at a safe place and make it accessible to others.



Attention

**Observe note!**

To not harm your safety or the lifetime of the device. Read the manual carefully and note the hints.



Overpressure

**Note labor regulations!**

Work on pneumatic equipment may only performed by specialist staff. Note there is an enlarged danger caused by overpressure.



Hand protection

**Note labor regulations!**

To prevent cut injuries wear gloves while assemble and work with the OSZ  
**Attention: Risk of injury!**



Use Eye protection

**Note labor regulations!**

To prevent injuries, wear Eye protection while work with the OSZ.  
**Attention: Risk of Eye injuries!**



Use breathing mask

**Note labor regulations!**

To prevent lung damage, wear a breathing mask while cut abrasive materials with the OSZ  
**Attention: Risk of lung damage!**

## Start-up

- Only use tools in accordance with the respective regulations governing compressed-air tools.
- Before use, always read the attached safety notice.
- Blow firmly through the compressed-air pipe (the compressed-air hose) before connecting the machine to the compressed-air supply, in order to remove any particles of dirt which have may have accumulated.
- Before connecting the machine to the compressed-air supply, check your compressed air for water content. Water, corrosion etc. in the pipe network cause rust inside the motor and therefore severe wear or machine breakdown.
- Provide air quality in accordance with DIN ISO 8573-1, Quality Class 4.
- Use a servicing unit which can be brought as close to the machine as possible. Adjust the oil supply amount to 1 drops (1 drop = 1,5 mm<sup>3</sup>) per 1 minute. We recommend the use of a mist oiler or servicing unit.
- Set the servicing unit to an operating pressure not exceeding 5,5 to 6 bar.
- Check the oil level and top up where necessary.
- Make sure that the compressed-air hose has the correct horizontal clearance! See the machine's Technical Data.
- Do not let the machine idle (unnecessary wear, as highest speed) Over dimensioned tools can cause accidents.

## Tool changing



Potential Danger

- Close the machine's compressed-air valve before any tool change.
- Always use tools which are fit for use



Hand protection

- Use the hexagon wrench for loosening the screw (Pos. 5) Install the blade (Shaft 6 mm) and adjust them on the Weldon flat. First tighten the screw only with your fingers, making sure that the blade is correctly installed. If correct, tighten the screw firmly.

## Handling

Switching on and off

**! Only via the machine controls !**



**Observe Note!**

You can't safely use the GSB OSZ if you use it not in accordance to the regulations. The user is responsible to all resulting Injures if the GSB OSZ is not used as intended. In this case the manufacturer is not responsible.

## Working method

- In order to achieve optimum performance, it is important to let the cutter do the work. Only work the material with a machine which is already running. Ensure that the cutter is correctly installed.
- Install the work piece, switch on the machine and apply the moving tool.
- If the energy supply is interrupted (compressed air), the machine must be switched off in order to avoid any unintended start if energy supply is restored.

## Maintenance



Potential Danger

- Disconnect the machine from the compressed-air supply before carrying out any maintenance work.
- Check the servicing unit and working air on a regular basis in terms of the points specified above in "Start-up".  
We recommend: preconnection of the servicing unit
- Sufficient and continuously intact oil lubrication is critical for optimum functioning.  
We recommend:

 **RIEGLER pneumatic-special-oil**

Item No. \_\_\_\_\_ 101135  
Type No. \_\_\_\_\_ 32  
EAN-Code: \_\_\_\_\_ 4047322072847

- Keep unit clean from dirt.



Overpressure

**Note labor regulations!**

Work on pneumatic equipment may only performed by specialist staff. Note there is an enlarged danger caused by overpressure.



Hand protection

**Note labor regulations!**

To prevent cut injuries wear gloves while assemble and work with the OSZ

**Attention: Risk of injury!**



Use Eye protection

**Note labor regulations!**

To prevent injuries, wear Eye protection while work with the OSZ.

**Attention: Risk of Eye injuries!**

## Repair

---



Potential Danger

- Only use original replacement parts.  
In this way you enhance safety and increase the service life of the machine.



Attention

- **The use of non-original replacement parts voids the guarantee.**
- **If the individual seals have been violated, we cannot take over any warranty.**

- Repairs should only be carried out by trained personnel. Questions should be addressed to the manufacturer or the nearest authorized dealer.
- Replacement parts can be sent on request.

## Guarantee

---

The manufacturer provides a machine guarantee of 12 months which covers material and design faults. Damage caused by wear, overloading or improper treatment or through non-compliance with the operating instructions are excluded from the guarantee.

**Complaints can only be dealt with if the equipment is sent to the manufacturer in a fully assembled condition and where only original replacement parts have been used.**

## Disposal

---

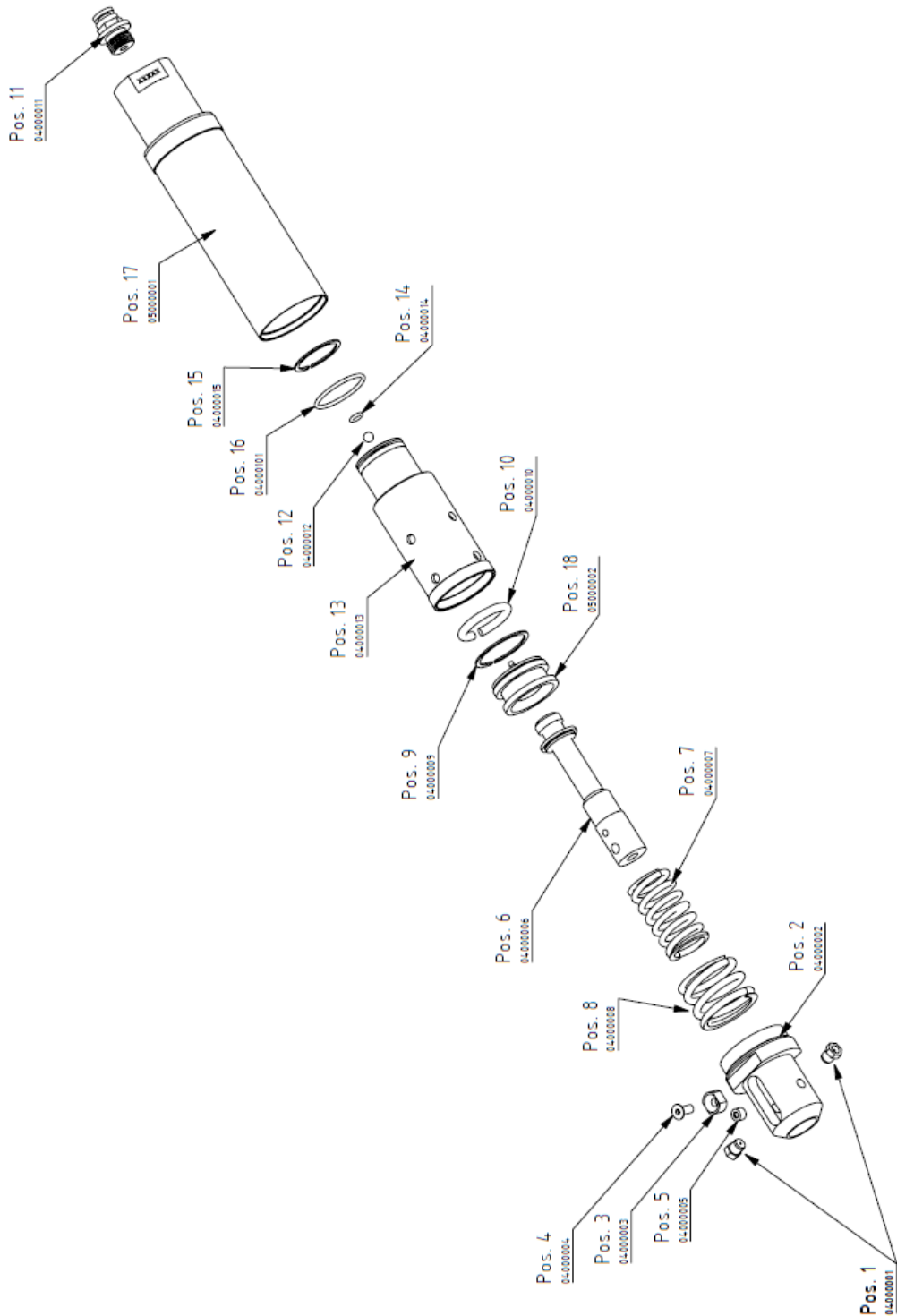
In order to dispose of the machines, they must be completely dismantled, degreased and sent for recycling after separation into their different constituent materials.



- **Act according to the disposal guidelines of your Country**



Arrangement plan



## Technical details

Product details		
Product	GSB OSZ 110	
Item number	01101100	
Construction year	2001	
Weight	1,05 kg	
Material	Stainless steel	
Dimensions		
Length (overall)	Approx. 200 mm	-> 7,87 in
Length (Bridge to table)	Approx. 40 mm	-> 1,57 in
Width	Approx. 40 mm	-> 1,57 in
Pneumactical details		
Hose diameter	6 mm	-> 0,24 in
Operating pressure	6 bar	-> 87 psi
Air consumption	120 l/min.	-> 4058 fl. oz. /min
Air quality	Lightly oiled and cleaned	
Oil consumption	1,5 mm <sup>3</sup> / min.	-> 1 drop / min
Recommended oil	See section <b>Maintenance</b>	
Technical details		
Tool capacity	Ø6 mm or Ø8mm	-> Ø0,24 in and Ø0,31 in
Stroke	5 – 7 mm	-> 0,31 in
Stroke frequency	9000 min <sup>-1</sup>	
Concentricity accuracy	0,2 mm and 0,05 mm	-> 0,08 in / 0,02 in
Max. feedrate (depending on material and blade)	Max.2500 mm/min	-> Max. 98,5 in/min
Noise level	77 dB(A)	
Vibration value	2,0 m/s <sup>2</sup>	
Warranty period		
Time	12 months	

We reserve ourselves to do Changes which serve the technical progress of the OSZ.



This product complies with the guidelines of the European Union.

Support address (manufacturer)

GSB GmbH  
 Steinstraße 35 d  
 D-25364 Brande-Hörnerkirchen / Germany